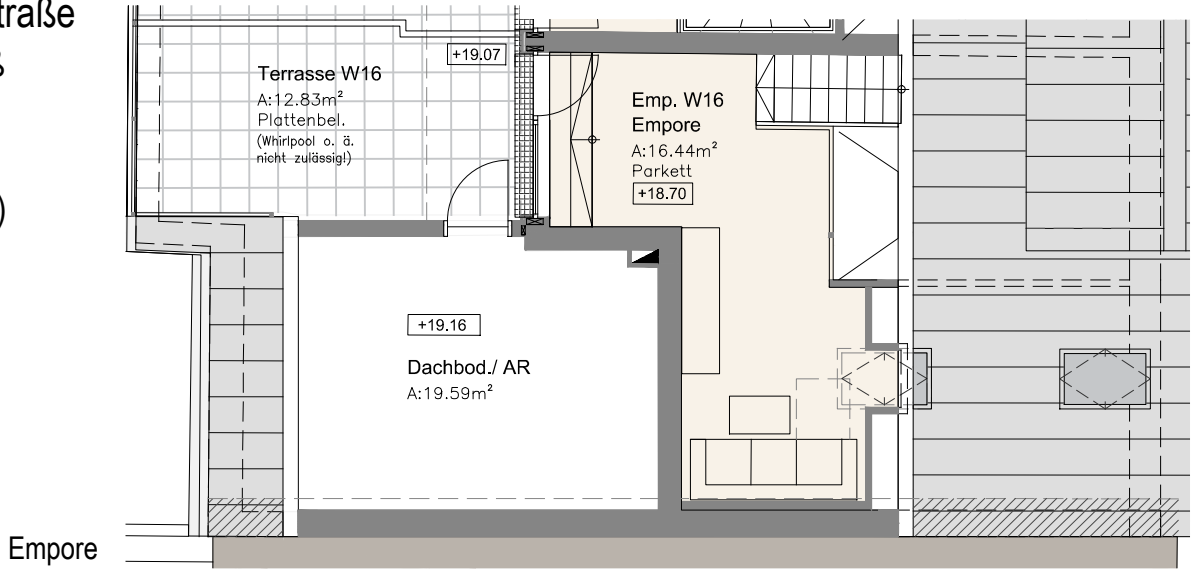
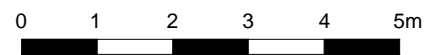
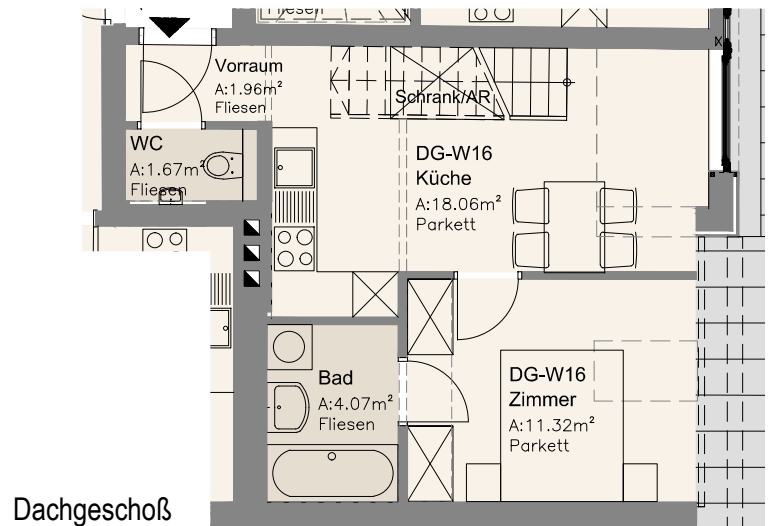


TOP 7

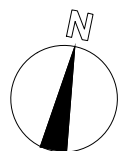
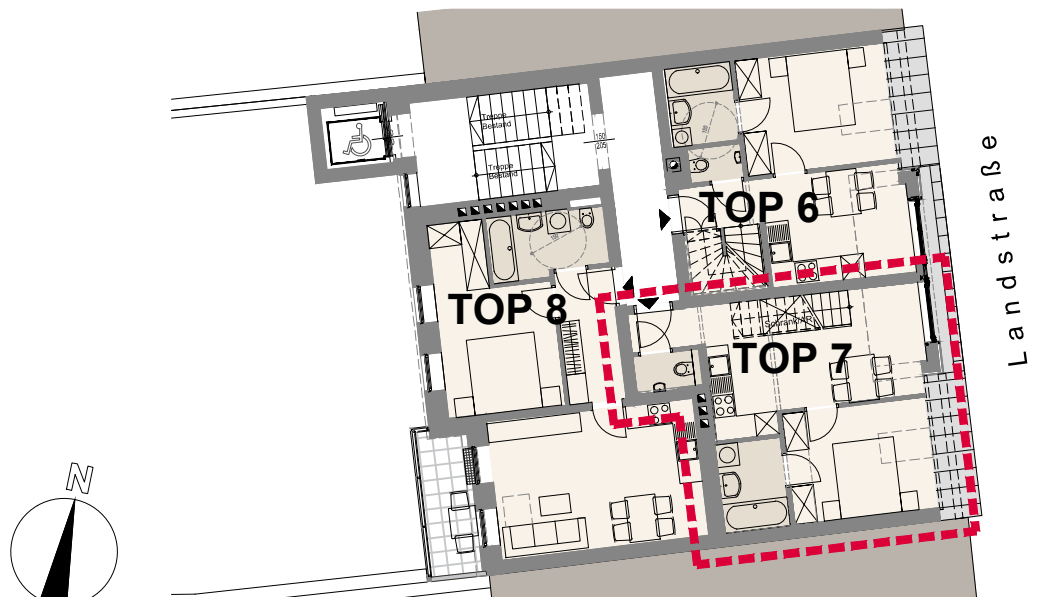
4.OG Landstraße
 (Dachgeschoß mit 2 Ebenen,
 Dachterrasse
 u. Dachboden)



NUTZFLÄCHE	53,5 m ²
DACHTERRASSE	12,8 m ²
DACHBODEN	19,6 m ²



M 1:100



ÜBERSICHT Geschoß M 1:200