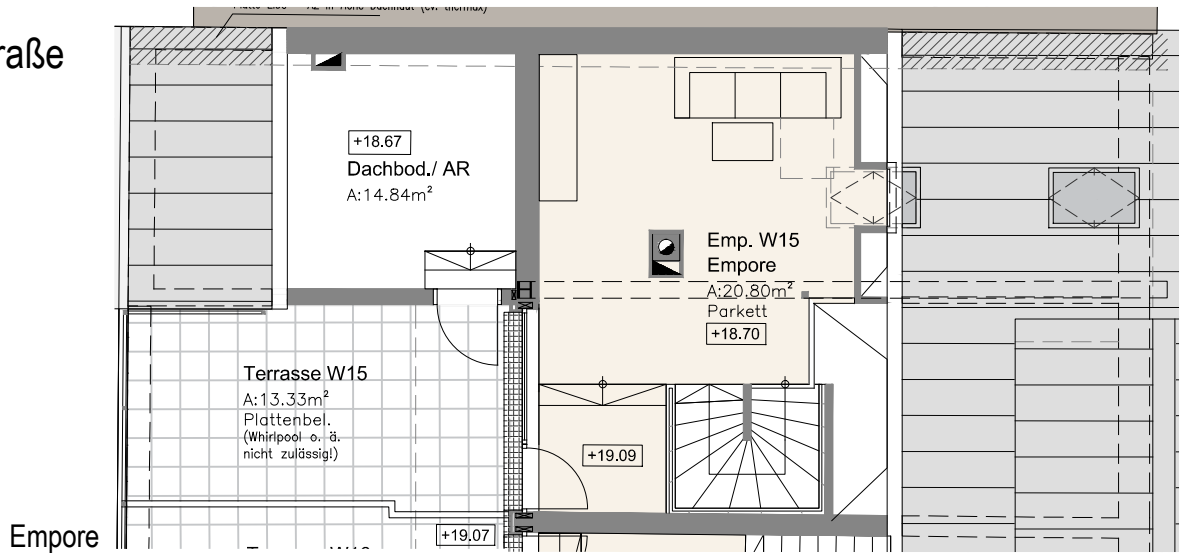
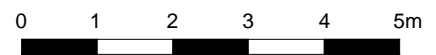
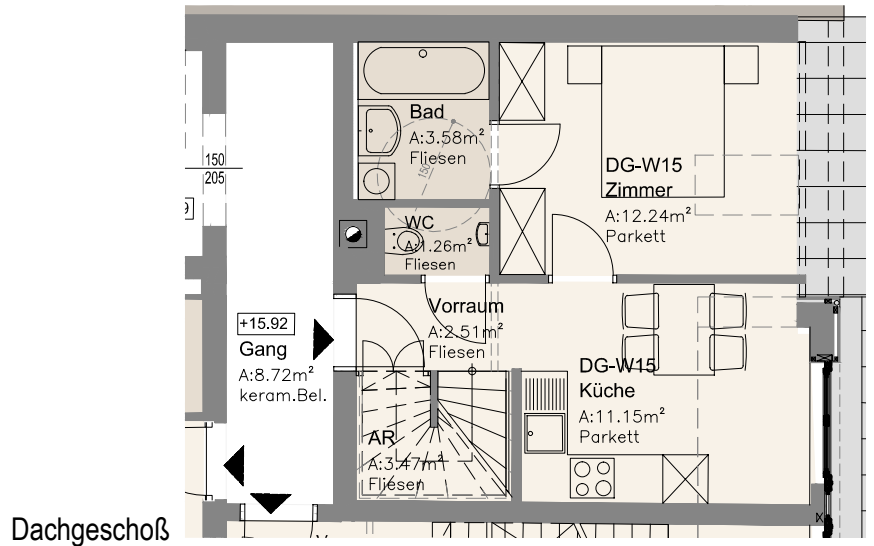


# TOP 6

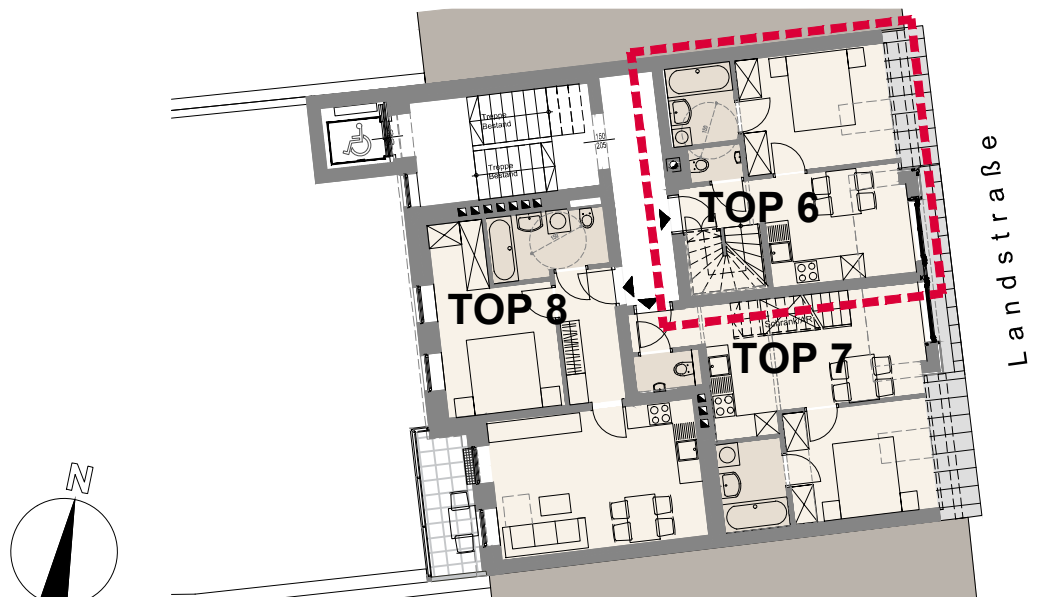
4.OG Landstraße  
 (Dachgeschoß  
 mit 2 Ebenen,  
 Dachterrasse  
 u. Dachboden)



NUTZFLÄCHE	55,0 m <sup>2</sup>
DACHTERRASSE	13,3 m <sup>2</sup>
DACHBODEN	14,8 m <sup>2</sup>



M 1:100



ÜBERSICHT Geschoß M 1:200